



INSTALLTEC


INSTALLTEC

ELECTROMECHANICAL LLC

CONTACT US

 +971 4 23 44999

 www.installtecuae.com

 sales@installtecuae.com
mohamed.haja@installtecuae.com

 ASCON House, Office No 127
Salah Al Din Road, Deira, Dubai,
United Arab Emirates



COMPANY PROFILE

We Installtec Electromechanical is a well known Systems and Solutions provider for the Residential, commercial and Industrial sector for Premise network, Security and other Low current installations.

Our Mechanical division offers turnkey solutions for steam, domestic / process water heating and cooling applications for industrial, commercial & residential sectors.

We also focus on energy saving products like air cooling pads, solar applications, heat pumps & innovative energy saving products. Our strong partnership with leading system manufacturers and industrial organization provides us confidence and know how to cater our target sector.

We have executed many prestigious and large projects. Our cost effective solutions with exceptional customer support is our main ingredient of success in this competitive Electro mechanical construction industry.

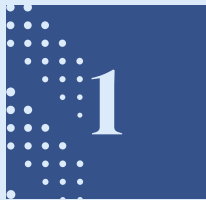
Our well qualified and experienced team always wins the confidence of our clients with their exceptional Pre Sales and Post Sales support to our valuable clients, we first understand the specific requirements, then develop the customized technology solution by carefully selecting the right mix of products.

We offer turnkey solution with all of the following services:
Design, Engineering, Supply, Installation and Testing/ Commissioning and maintenance.



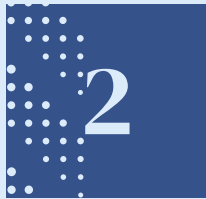
INSTALLTEC

TABLE OF CONTENT



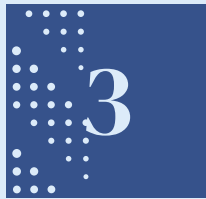
About Us

An overview of our journey, values, expertise, and commitment to client success.



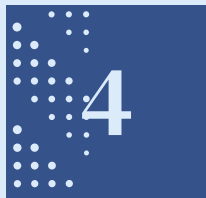
Organization Chart

Our leadership structure and team roles that drive efficiency and success.



Industries we cater

Sectors we serve with tailored solutions across IT, physical security, automation, and infrastructure.



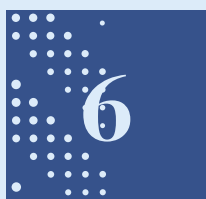
Products And Services

Comprehensive offerings designed to meet diverse client needs in technology and building services.



Project Reference

Key projects showcasing our expertise, innovation, and successful client collaborations.



Cerficates

Our certifications and accreditations, reflecting quality, compliance, and industry standards.



ABOUT US

Installtec Electromechanical LLC has been working in the area of ICT, Electrical, Automation and Electromechanical works, etc. The company has industry certified and well experienced engineers that have been working on designing and installation of high-tech solutions.

We have been well-known Systems and Solutions provider for the Residential, commercial and Industrial sector for Premise network, Security and other Low current installations.

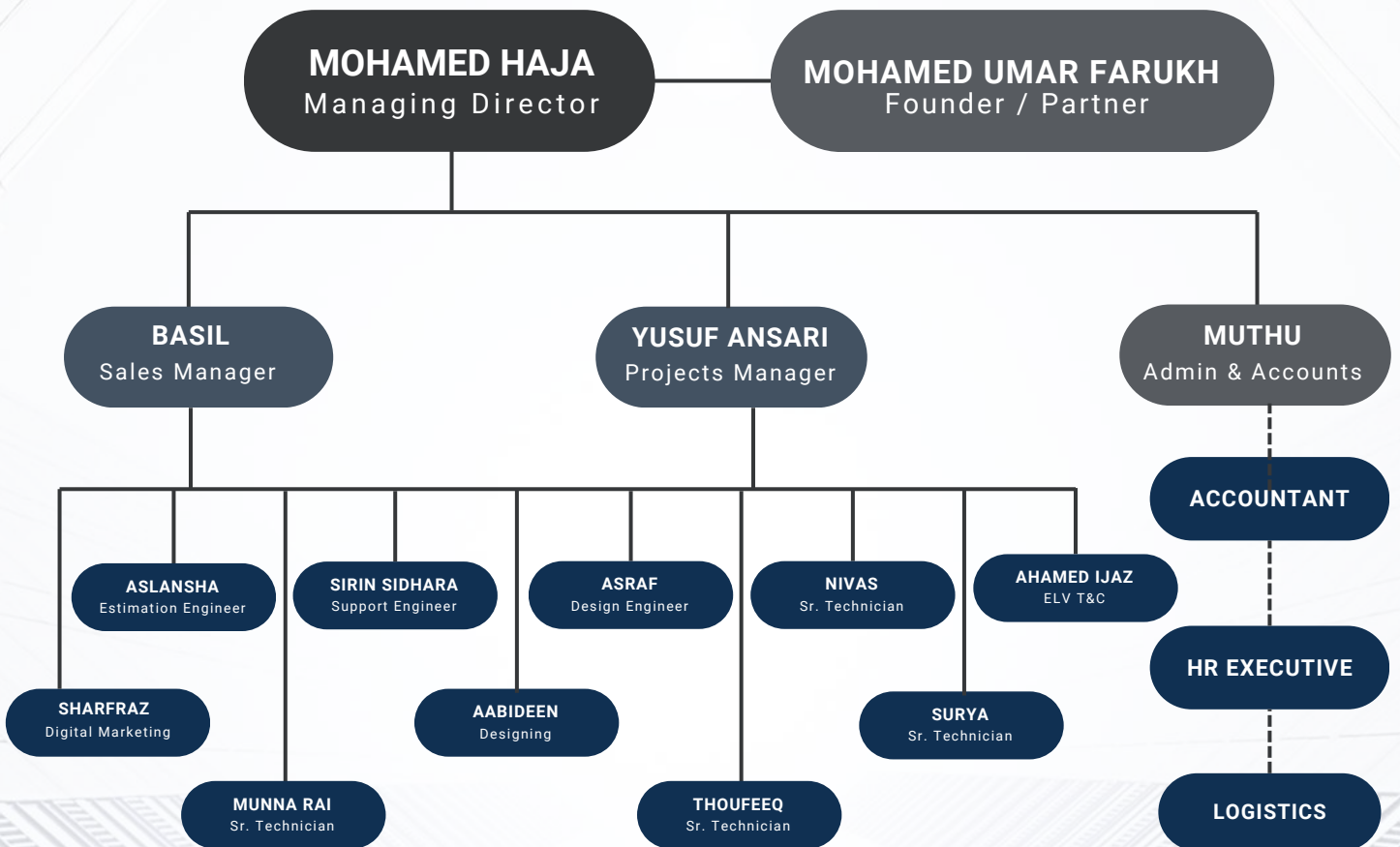
We are SIRA registered CCTV installation contractor. Our Mechanical division offers turnkey solutions for steam, domestic / process water heating and cooling applications for industrial, commercial & residential sectors. We also focus on energy saving products like air cooling pads, solar applications, heat pumps & innovative energy saving products.

We offer turnkey solution with all of the following services: Design, Engineering, Supply, Installation and Testing/ Commissioning and maintenance.

Our strong partnership with leading system manufacturers and industrial organization provides us confidence and know how to cater our target sector. We executed Projects in UAE, Saudi Arabia, Ethiopia and Uganda.



ORGANIZATIONAL CHART





MOHAMED HAJA

Managing Director

A visionary leader with a robust academic background and over **27 years of experience**, Mohamed Haja brings a unique blend of technical expertise and strategic acumen to the industry. He holds a Bachelor's Degree in Electrical Engineering and MBA in Marketing and Strategic Financial Modelling.

Mohamed has dedicated his career to advancing **IT infrastructure, physical security, and automation solutions** across diverse sectors. His expertise lies in: Designing and implementing specialized systems tailored for unique use cases and mission-critical applications: Leading **product development** and **market positioning** strategies to drive business growth and technological innovation

Mohamed has played a pivotal role in the successful execution of several **landmark projects** across the Middle East, India, and East Africa, holding senior positions that shaped the future of **building services** and infrastructure.

With a passion for innovation and a commitment to excellence, Mohamed Haja continues to lead Installtec in delivering cutting-edge solutions that redefine industry standards.



Mohamed Umar Farukh

Founder / Partner

With a distinguished career spanning over 27 years, Mohamed Umar Farukh brings extensive expertise in the **Elevator and Escalator** industry, coupled with a strong background in operations and market development. Farukh holds a Bachelor of Science (B.Sc.) & MBA in Operations Management

Mohamed has built a formidable career working with **Mitsubishi**, a global leader in elevator and escalator solutions. His accomplishments include: Spearheading **business development** initiatives in Saudi Arabia, and successfully expanding operations across the **GCC** and **African** markets; Establishing and growing the **Lifts Division**, driving market penetration and enhancing brand presence in new regions

Over the past 8 years, he has focused on **developing high-value real estate assets** in the **Madurai region**, leveraging his technical and business expertise to maximize project success and investment returns

Mohamed Umar Farukh's proven leadership and strategic insights continue to drive growth and innovation, making him a key contributor to the company's success in both established and emerging markets.



INSTALLTEC

CORE TEAM

YUSUF ANSARI

Projects Manager

A **Diploma holder in Engineering** and **SIRA-certified CCTV specialist**, Yusuf Ansari brings over 15 years of experience as an **ELV (Extra Low Voltage) specialist**, with a focus on **IT infrastructure design and implementation**. He is proficient in delivering **end-to-end IT cabling solutions** for both **copper** and **fiber optic networks**, ensuring seamless integration and optimal system performance. With a proven track record of managing and executing **key infrastructure projects in Dubai**, Yusuf excels in providing physical security solutions and overseeing the management of **Annual Maintenance Contracts (AMC)** and building services. His technical expertise, hands-on approach, and commitment to excellence consistently drive **innovation** and **operational** efficiency across all projects.

MUTHU

Admin & Accounts Executive

Muthu has 6 years of experience in **administration and accounts**, managing day-to-day operations, financial reporting, and ensuring smooth administrative processes.

AHAMED IJAZ

Lighting Control & BMS Engineer

An **Engineering Graduate** with 2 years of experience, Ahamed specializes in **lighting control systems** and **Building Management Systems (BMS)**, ensuring efficient and automated building operations.

BASIL

Sales Manager

An Engineering Graduate with 18 years of diverse experience, is a dynamic Sales Manager known for building strong client relationships and delivering tailored solutions. He has extensive expertise in **Public-Private Partnership (PPP) projects** and a deep understanding of the **African market**, enabling him to navigate challenges and drive growth. Basil's customer-centric approach ensures seamless project delivery and client satisfaction. A results-driven professional with exceptional public relations skills, he fosters lasting partnerships. His commitment to excellence, proactive attitude, and market insights makes him a valuable asset in driving sales and business development success.

ASLANSHA

Pre-Sales Engineer

With 5 years of experience, Aslan excels in **project estimation** and **pre-sales engineering**, offering tailored solutions to meet client requirements and optimize project costs.

SIRIN SIDHARA

Service Support Engineer

With 2 years of experience, Sirin is responsible for **technical documentation** and providing **service support** to ensure client satisfaction and operational continuity.



INSTALLTEC

FIELD TEAM

ASRAF

Engineering & Technical
Documentation Specialist

Asraf has 2 years of experience in **design drawing** and **technical documentation**, providing detailed and accurate project documentation for smooth execution.

AABIDEEN

AutoCAD 2D Design
Specialist

Aabideen brings 2 years of experience in **AutoCAD 2D design**, delivering precise and efficient designs for electrical and ELV systems.

NIVAS

Senior Technician – CCTV
Specialist

With over 6 years of experience, Nivas is a **SIRA-certified** expert in **CCTV installation, configuration, and maintenance**, delivering high-performance surveillance solutions across various projects.

THOUFEEQ

Senior Technician – Electrical
& ELV Installation Expert

With 5 years of experience, Thoufееq is a highly skilled professional in **electrical works** and **ELV (Extra Low Voltage) system installations**, known for his precision and reliability in project execution.

SURYA

Senior Technician – Access
Control & CCTV Specialist

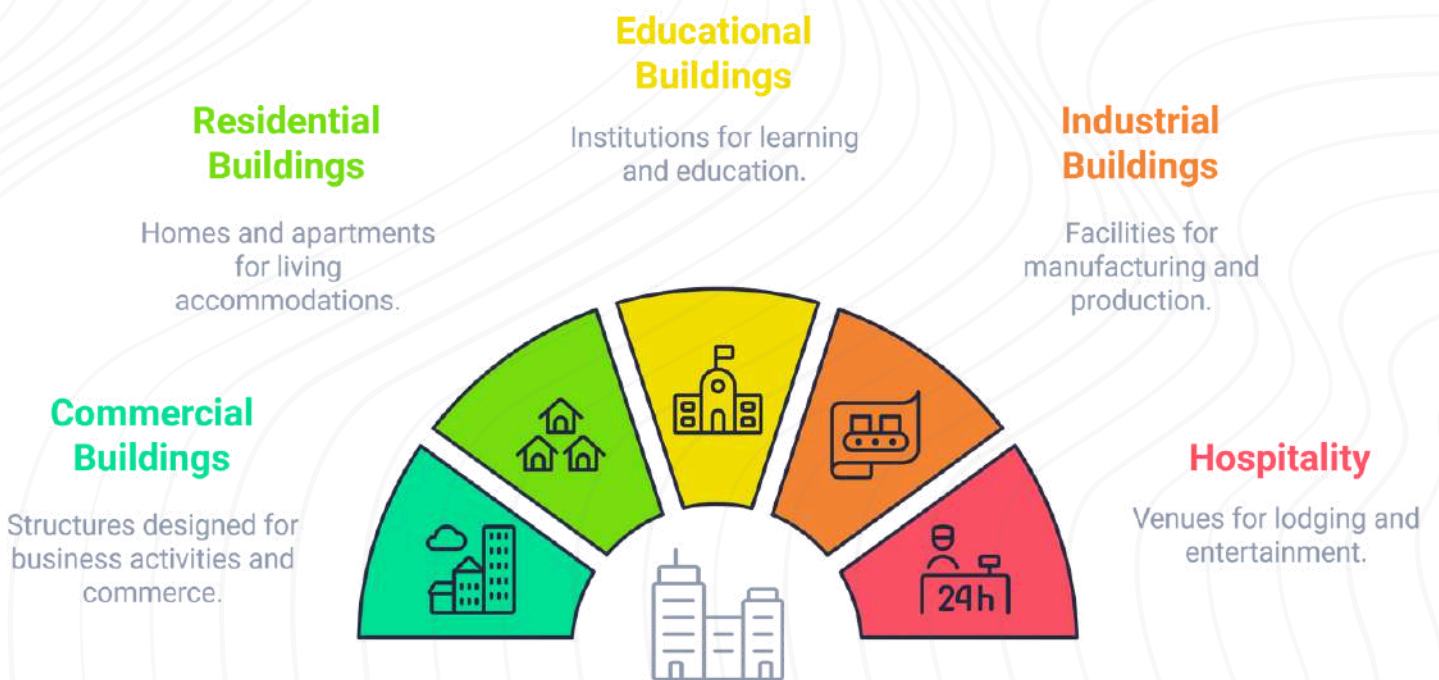
Surya brings 5 years of expertise in **the installation and integration of access control** and **CCTV systems**, ensuring seamless security solutions for clients.

MUNNA RAI

Raceway Installation
& Cabling Specialist

With a decade of hands-on experience, Munna is a specialist in **raceway installations** and **cable pulling**, delivering structured cabling solutions with precision and efficiency.

INDUSTRIES WE CATER



COMMERCIAL BUILDING

Providing advanced IT infrastructure, security, and automation solutions for seamless operations and enhanced tenant experiences.

RESIDENTIAL BUILDING

Delivering tailored smart home, security, and energy management systems for modern, safe, and comfortable living spaces.

EDUCATION BUILDING

Implementing technology-driven solutions to create secure, connected, and efficient learning environments.

INDUSTRIAL BUILDING

Offering robust infrastructure, automation, and security systems to optimize industrial operations and ensure safety.

HOSPITALITY

Enhancing guest experiences with integrated security, automation, and energy solutions for hotels and resorts.

GOVERNMENT BUILDING

Providing secure, scalable, and efficient IT and security solutions for public infrastructure and government facilities.



PRODUCTS AND SERVICES



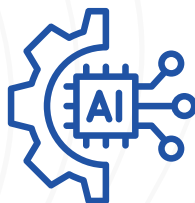
IT Infrastructure

- Structured cabling
- Servers & Desktops
- Network switches
- IP Telephone
- Routers & Firewalls
- WiFi
- Digital signage
- IP TV



Physical Security

- CCTV SYSTEM / VIDEO SURVEILLANCE
- ANPR
- Access control
- Gate barrier
- Flap Barrier
- Perimeter security
- Intercom & Emergency Communication
- Biometric Access and Time Attendance



Automation

- Building management system
- Delta T Controls
- HVAC control
- Pumps & Fan control
- Lighting control system
- Home automation



Data Center



Offices



Commercial
Developments



Manufacturing
Units



Residential
Apartments



Mixed Use
Developments

STRUCTURED CABLING SYSTEMS

Structured cabling system is a complete system of cabling and associated hardware, which provides a comprehensive telecommunications infrastructure that integrates voice, data and video services.

This infrastructure serves a wide range of uses, such as to provide telephone service or transmit data through a computer network. Structured cabling design and installation is governed by a set of standards that specify wiring standards for various entities.

We could offer complete SCS solutions which includes but not limited to the indicated verticals here with. We further define a structured cabling system in terms of ownership.

The structured cabling system begins at the point where the service provider (SP) terminates.

This point is the point of demarcation (demarc) or Network Interface Device (NID). For example, in a telephone system installation, the SP furnishes one or more service lines (per customer requirements). The SP connects the service lines at the point of demarcation.

KEY BENEFITS OF THESE STANDARDS INCLUDE:

- Consistency of design and installation
- Conformance to physical and transmission line requirements
- A basis for examining a proposed system expansion and other changes maintaining uniformity

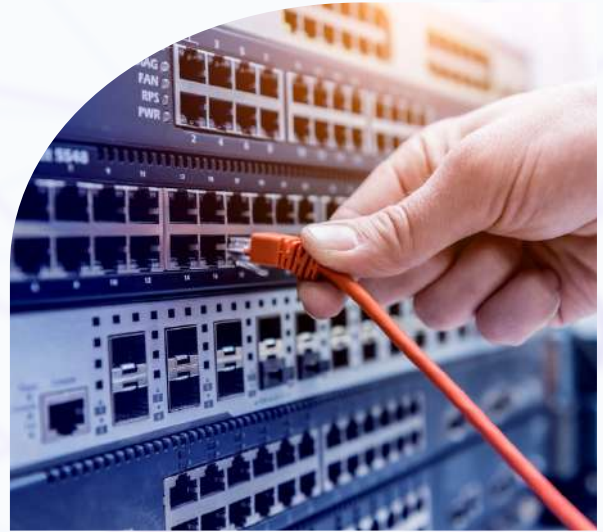
SERVERS & DESKTOPS

Servers are often dedicated, meaning that they perform no other tasks besides their server tasks. Different servers do different jobs, from serving email and video to protecting internal networks and hosting Web sites. We could source genuine servers, desktops, laptops and other related IT accessories as per requirements at a competitive cost from reliable sources / product partners / manufactures.



NETWORK SWITCHES

Our network switches offer high-performance, scalable, and reliable solutions for seamless data transmission across your IT infrastructure. Designed for enterprise, commercial, and industrial applications, our switches support Gigabit and PoE connectivity, ensuring optimal speed and power delivery for connected devices. With advanced features like VLAN, QoS, and network security, our switches enhance network efficiency, minimize downtime, and ensure data integrity. Whether for small businesses or large enterprises, our solutions are tailored to meet your connectivity needs, delivering exceptional performance and future-ready scalability. Optimize your network with our cutting-edge switches for enhanced productivity and operational success.



KEY BENEFITS

- **High Performance & Scalability:** Supports Gigabit and PoE connectivity for seamless, reliable, and scalable network operations.
- **Advanced Security Features:** Integrated VLAN, QoS, and network security protocols to protect data and enhance network efficiency.
- **Optimized Connectivity:** Ensures minimal downtime and maximized productivity for enterprise, commercial, and industrial applications.



IP TELEPHONE SYSTEMS

PBX & PABX are most known telephone systems widely used by many organizations, enterprises & institutions. A private automatic branch exchange (PABX) is an automatic telephone switching system within a private enterprise. The users of the PBX can communicate internally (within their company) and externally (with the outside world), using different communication channels like Voice over IP, ISDN or analog.

A PABX ALSO ALLOWS YOU TO,

- Have more phones than physical phone lines Allows free calls between users
- It provides features like transfers, voicemail, call recording,
- interactive voice menus (IVRs) and call queues.



WIFI

In computer networking, a wireless access point (WAP), or more generally just access point (AP), is a networking hardware device that allows a WiFi device to connect to a wired network. The AP usually connects to a router (via a wired network) as a standalone device, but it can also be an integral component of the router itself. An AP is differentiated from a hotspot, which is the physical location where WiFi access to a WLAN is available.

KEY BENEFITS

- Broader range of transmission
- More users access
- Flexible networking
- Multi-AP interconnection

ROUTERS & FIREWALLS

Our routers and firewalls provide secure, reliable, and high-speed connectivity for businesses of all sizes. Designed to handle complex network environments, they ensure seamless data routing, load balancing, and remote access while safeguarding your network from cyber threats. With advanced features like VPN, intrusion prevention systems (IPS), and deep packet inspection (DPI), our solutions deliver robust security without compromising performance.

Whether you need secure connections for multiple locations or protection against evolving threats, our routers and firewalls are optimized for scalability, efficiency, and continuous network protection, ensuring your business stays connected and secure.

KEY BENEFITS

- **High-Speed Connectivity:** Ensures fast, stable, and seamless data flow across local and remote networks.
- **Comprehensive Security:** Protects against cyber threats with advanced firewalls, IPS, and VPN support.
- **Scalable & Reliable:** Easily adapts to growing business needs while maintaining consistent network performance and uptime.





DIGITAL SIGNAGE

Enhance your communication and engagement with our dynamic digital signage solutions. Designed for retail, corporate, hospitality, and public spaces, our digital displays deliver visually impactful content that captures attention and drives customer interaction.

From interactive kiosks to large-format displays, we offer customizable solutions tailored to your branding and messaging needs. Manage and update content remotely in real-time with our user-friendly content management system (CMS), ensuring your audience always receives relevant and engaging information.

Elevate your brand presence, improve customer experience, and streamline communication with our innovative digital signage solutions.

KEY BENEFITS

- **Engage Audiences:** Deliver visually appealing, dynamic content to attract and retain viewer attention.
- **Real-Time Updates:** Effortlessly manage and update content remotely for timely communication.
- **Customizable & Scalable:** Tailored solutions to meet the unique needs of different industries and environments.

IP TV

Transform the way you deliver entertainment and information with our cutting-edge IPTV (Internet Protocol Television) solutions. Designed for hospitality, residential, corporate, and commercial environments, our IPTV systems offer seamless delivery of high-definition video content over IP networks, providing a personalized and interactive viewing experience.

With features like live TV streaming, video-on-demand (VOD), and customizable user interfaces, our solutions enhance user engagement and satisfaction. Our scalable IPTV systems integrate effortlessly with existing networks and can be tailored to deliver targeted content, advertisements, or announcements to specific audiences or locations.

KEY BENEFITS

- **High-Quality Streaming:** Delivers HD and 4K content with minimal latency for an exceptional viewing experience.
- **Customizable Interface:** Offers personalized content and branding for enhanced user engagement.
- **Scalable & Flexible:** Easily integrates with existing networks and expands to meet growing business needs.





CCTV SYSTEM / VIDEO SURVEILLANCE

Ensure safety, security, and peace of mind with our advanced CCTV system solutions. Designed for residential, commercial, and industrial environments, our surveillance systems provide 24/7 monitoring with high-definition video capture, real-time alerts, and remote access capabilities.

Our solutions include IP cameras, analog cameras, and hybrid systems, integrated with advanced features such as motion detection, night vision, AI-powered analytics, and cloud storage. Whether it's monitoring a single location or managing multiple sites, our CCTV systems offer seamless scalability and comprehensive coverage to protect your assets, people, and property.

KEY BENEFITS

- Enhanced Security: Monitor and safeguard your premises with real-time, high-definition video surveillance.
- Remote Access: Access live and recorded footage anytime, anywhere via mobile or web applications.
- Scalable & Intelligent: Easily expand the system and leverage AI-driven analytics for proactive threat detection and response.



ANPR (AUTOMATIC NUMBER PLATE RECOGNITION) SYSTEM

Automatic Number Plate Recognition (ANPR) solution will be implemented with an intention to capture the number plates of vehicles getting into various secured premises and this solution can be applied to both low and high-speed applications. The ANPR software allows for the identification and capturing of number plate information via cameras and back end algorithms and get stored in secured internal databases.

KEY BENEFITS

- Ensure maximum security.
- Deny unauthorized access.
- Ability to capture information regardless of speed or light conditions.
- High definition images for identification with event logs

Thus provides 24/7 access to users.





ACCESS CONTROL SYSTEM

Secure your premises with our intelligent Access Control System designed to manage and monitor entry points efficiently. Our solutions offer a seamless blend of security, convenience, and scalability for residential, commercial, and industrial applications.

We provide a range of technologies, including keycard access, biometric authentication, PIN-based entry, and facial recognition, ensuring only authorized individuals gain access. Our systems integrate with existing security infrastructure, offering real-time monitoring, audit trails, and remote management to enhance operational control and compliance.

KEY BENEFITS

- **Enhanced Security:** Restrict unauthorized access with advanced authentication methods and real-time monitoring.
- **Customizable & Scalable:** Tailor the system to your specific security needs and easily expand as your business grows.
- **Seamless Integration:** Integrates with CCTV, alarm systems, and building management systems for comprehensive security coverage.

GATE BARRIERS

Optimize security and streamline vehicle access with our robust Gate Barrier System. Designed for residential communities, commercial buildings, industrial facilities, and parking lots, our automated solutions provide efficient, controlled entry and exit for vehicles.

Equipped with advanced technologies like RFID, ANPR (Automatic Number Plate Recognition), and remote control access, our gate barriers ensure seamless operation, enhanced security, and reduced manual intervention. The system can be integrated with access control and CCTV systems for a comprehensive security solution, improving traffic flow and preventing unauthorized vehicle access.

KEY BENEFITS

- **Improved Security:** Prevent unauthorized access and enhance perimeter control with automated barriers.
- **Efficient Traffic Management:** Streamline vehicle flow with quick and reliable entry/exit mechanisms.
- **Seamless Integration:** Easily integrates with access control, ANPR, and CCTV systems for enhanced functionality and security.





FLAP BARRIERS

Enhance security and manage pedestrian access with our sleek and reliable Flap Barrier Systems. Ideal for corporate offices, residential complexes, airports, metro stations, and other high-traffic areas, these systems provide controlled access while maintaining a smooth and efficient flow of people.

Our flap barriers feature advanced RFID, biometric, and facial recognition technologies, ensuring only authorized individuals gain entry. Designed for durability and aesthetics, they integrate seamlessly with access control and visitor management systems, offering a secure, user-friendly solution for any facility.

KEY BENEFITS

- **Enhanced Security:** Restrict unauthorized access with advanced authentication methods and real-time monitoring.
- **Efficient Pedestrian Flow:** Ensure seamless and controlled entry, even during peak hours.
- **Customizable & Aesthetic Design:** Tailored to fit various environments while maintaining a modern, professional appearance.

PERIMETER SECURITY

Protect your assets and ensure the safety of your facility with our advanced Perimeter Security Solutions. Designed for industrial sites, commercial properties, residential communities, and critical infrastructure, our systems offer comprehensive protection by securing the outer boundaries of your premises.

Our solutions include fence-mounted sensors, infrared beams, motion detectors, and CCTV integration, providing real-time monitoring and instant alerts for any unauthorized entry or breach. With customizable options, our perimeter security systems are tailored to meet the unique requirements of your site, offering both physical and digital layers of protection.

KEY BENEFITS

- **Enhanced Protection:** Detect and prevent intrusions before they reach critical areas.
- **Real-Time Monitoring:** Receive instant alerts and respond quickly to security threats.
- **Scalable & Customizable:** Easily expand and adapt the system to meet evolving security needs.





INTERCOM & EMERGENCY COMMUNICATION

Ensure seamless communication and quick response in any environment with our Intercom and Emergency Communication Solutions. Designed for commercial buildings, residential complexes, hospitals, schools, and industrial facilities, our systems provide efficient and reliable communication for everyday needs and emergency situations.

Our intercom systems feature advanced audio/video integration, allowing instant communication between residents, security personnel, and visitors. Our emergency communication systems offer panic buttons, emergency alerts, and two-way communication, ensuring quick response times and clear coordination during critical situations.

KEY BENEFITS

- **Improved Safety:** Facilitate quick communication in emergencies with integrated intercom and alert systems.
- **Efficient Communication:** Ensure clear, real-time communication across various areas and departments.
- **Reliable and Robust:** Designed for durability, our systems provide uninterrupted communication when you need it most.

BIOMETRIC ACCESS AND TIME ATTENDANCE

Enhance security and streamline workforce management with our cutting-edge Biometric Access and Time Attendance Solutions. Designed for commercial and industrial environments, our systems offer advanced fingerprint, facial recognition, and iris scanning technology to ensure secure, accurate, and contactless access control and attendance tracking.

Our solutions eliminate the need for physical cards or PINs, reducing the risk of unauthorized access and time theft. With real-time data synchronization and reporting, you can easily manage employee attendance, streamline payroll processing, and improve overall operational efficiency.



KEY BENEFITS

- **Enhanced Security:** Prevent unauthorized access with secure biometric authentication.
- **Accurate Time Tracking:** Ensure precise attendance records for efficient payroll management.
- **Streamlined Operations:** Improve workforce management with real-time data and automated processes.



INSTALLTEC

AUTOMATION



BUILDING MANAGEMENT SYSTEM

Optimize the performance of your facility with our advanced Building Management System (BMS) solutions. Designed to integrate and automate core building functions, our BMS enhances efficiency, comfort, and sustainability for commercial, residential, industrial, and hospitality sectors.

Our solutions provide centralized control and monitoring of HVAC, lighting, energy management, access control, fire safety, and more. With real-time data analytics and remote management capabilities, our BMS systems empower you to make informed decisions, reduce energy consumption, and maintain a comfortable and secure environment.

KEY BENEFITS

- **Operational Efficiency:** Streamline building operations through centralized control and automation.
- **Energy Savings:** Reduce energy consumption and costs with intelligent monitoring and optimization.
- **Enhanced Comfort & Safety:** Maintain optimal indoor environments and ensure compliance with safety standards.

DELTA T CONTROLS

Ensure optimal temperature regulation and energy efficiency with our advanced Delta T Controls Solutions. Designed for HVAC systems, industrial processes, and energy management, Delta T (temperature differential) controls help maintain precise temperature differences between supply and return air or water, optimizing system performance.

By continuously monitoring and adjusting the temperature differential, our Delta T controls prevent energy wastage, extend equipment life, and improve system efficiency. These systems are ideal for managing cooling towers, chillers, and heat exchangers, ensuring that operations run smoothly and cost-effectively.

KEY BENEFITS

- **Energy Efficiency:** Optimize temperature differentials to reduce energy consumption and operational costs.
- **Enhanced System Longevity:** Prevent overworking of HVAC and cooling equipment by maintaining ideal temperature levels.
- **Improved Performance:** Ensure consistent system performance by maintaining optimal operating conditions.





INSTALLTEC

AUTOMATION



HVAC CONTROL

Achieve optimal comfort, energy efficiency, and control with our advanced HVAC Control Systems. Tailored for residential, commercial, and industrial spaces, our solutions ensure seamless operation of heating, ventilation, and air conditioning systems.

With features like smart thermostats, zoned climate control, and real-time monitoring, our systems allow you to maintain ideal indoor temperatures while minimizing energy consumption. Integration with Building Management Systems (BMS) enhances automation and provides centralized control for large-scale operations.

KEY BENEFITS

- **Energy Efficiency:** Optimize energy usage to reduce costs and environmental impact.
- **Enhanced Comfort:** Maintain precise temperature control tailored to different zones or areas.
- **Smart Automation:** Leverage real-time monitoring and scheduling for hassle-free HVAC management.

PUMPS & FAN CONTROL

Enhance efficiency and performance with our advanced Pumps and Fan Control Systems, designed for commercial, industrial, and residential applications. These systems provide intelligent automation and seamless integration for managing water, air, and ventilation systems.

Our solutions include features like variable frequency drives (VFDs), smart sensors, and real-time monitoring, ensuring optimal energy usage and precise control. Whether managing HVAC systems, water supply, or industrial processes, our control systems are tailored to improve efficiency, reduce operational costs, and enhance system longevity.

KEY BENEFITS

- **Energy Optimization:** Reduce energy consumption through intelligent speed and load control.
- **Enhanced System Lifespan:** Minimize wear and tear with precise and adaptive controls.
- **Seamless Integration:** Easily integrates with Building Management Systems for centralized monitoring and control.





INSTALLTEC

AUTOMATION



LIGHTING CONTROL SYSTEM

Transform the way you manage lighting with our innovative Lighting Control Systems. Designed for commercial, residential, and industrial applications, our solutions offer energy efficiency, enhanced ambiance, and seamless automation.

Our systems include smart dimming, motion sensors, daylight harvesting, and remote control capabilities, allowing you to customize lighting based on occupancy, time of day, or specific tasks. By integrating with building management systems (BMS) or standalone controls, our lighting solutions enhance comfort, reduce energy consumption, and improve operational efficiency.

KEY BENEFITS

- **Energy Efficiency:** Optimize lighting usage to reduce power consumption and operational costs.
- **Customizable Ambiance:** Tailor lighting settings to suit various activities and environments.
- **Seamless Automation:** Enable smart scheduling and integration with other systems for enhanced functionality.

HOME AUTOMATION SYSTEM

Experience the ultimate in convenience, comfort, and security with our state-of-the-art Home Automation Systems. Designed to transform your living spaces, our solutions integrate lighting, climate control, entertainment systems, security, and appliances into one smart ecosystem.

Control and monitor your home effortlessly through mobile apps or voice assistants, whether you're at home or away. With personalized settings and automation schedules, our systems adapt to your lifestyle while enhancing energy efficiency and security.

KEY BENEFITS

- **Convenience & Control:** Manage your home effortlessly with centralized and remote control options.
- **Enhanced Security:** Protect your home with integrated security features, including cameras, sensors, and alerts.
- **Energy Efficiency:** Reduce energy costs with smart scheduling and automation tailored to your needs.





DIGITAL SIGNAGE

Engage your audience and transform your space with our innovative Digital Signage Solutions. Designed for retail stores, corporate offices, hospitality venues, educational institutions, and more, our systems deliver dynamic, high-impact content to captivate viewers and communicate effectively.

From stunning video walls to interactive displays, our solutions offer versatile applications such as advertising, real-time updates, wayfinding, and corporate branding. With easy-to-use content management systems (CMS), businesses can create, schedule, and update content effortlessly, ensuring impactful messaging tailored to your audience.

KEY BENEFITS

- **Dynamic Engagement:** Deliver visually stunning and interactive content to captivate your audience.
- **Customizable Content:** Tailor messaging for specific locations, audiences, or events in real-time.
- **Enhanced Brand Visibility:** Strengthen brand identity with Digital signage

ENERGY MONITORING

Optimize energy efficiency and streamline utility management with our advanced Energy Monitoring and BTU Meter Logging & Billing Solutions. Designed for residential, commercial, and industrial buildings, these systems provide precise measurement and reporting of energy and thermal usage.

Our solutions offer real-time energy monitoring, BTU meter logging, and automated billing, ensuring transparency and accuracy. With detailed analytics and insights, building managers can identify inefficiencies, optimize consumption, and reduce costs while ensuring fair billing for tenants or occupants.



KEY BENEFITS

- **Accurate Monitoring:** Real-time tracking of energy and BTU consumption for efficient management.
- **Automated Billing:** Simplify billing processes with accurate and transparent usage-based invoices.
- **Cost Optimization:** Identify and eliminate inefficiencies, reducing energy waste and expenses.



Intrusion Detection & Alarm is a system designed to detect intrusion unauthorized entry into a building or other area. Security alarms are used in residential, commercial, industrial, and military properties for protection against burglary (theft) or property damage, as well as personal protection against intruders. Intrusion alarm system consists of one or more sensors to detect intruders, and an alerting device to indicate the intrusion. Some alarm systems serve a single purpose of burglary protection systems provide both fire and intrusion protection. Intrusion alarm systems may also be combined with closed circuit television surveillance (CCTV) systems to automatically record the activities of intruders, and may interface to access control systems for electrically locked doors. Systems range from small, self-contained noise makers, to complicated, multi area systems with computer monitoring and control It may even include two-way voice which allows communication between the panel and Monitoring station.

SYSTEM COMPONENTS

- Alarm Control Panel
- Sensors
- Alerting devices
- Keypads
- Central Monitoring System

KEY BENEFITS

- Constant Protection
- Strong Deterrent
- Uninterrupted Functionality
- Can Relocate
- Centralized Monitoring



Audio & Video door phone also known as Intercom is a stand-alone communication system used to manage calls made at the entrance to a building (residential complex, detached family home, work place, etc.) with access controlled by audio-visual communication between the inside and outside. Video door entry consists of both outside and indoor elements. An outdoor panel is placed on outside entrance with an electronic lock release and an indoor monitor.

The outdoor panel or street panel is installed beside the entrance door or gateway and incorporates different elements suitable to be in any climate conditions. One or several push buttons to make the call (usually one per home or apartment), a micro camera adapted for night vision to capture the image of the caller, a microphone to pick up their voice and a speaker to reproduce the voice of the indoor occupant. A video door entry panel may include push buttons to call the homes or offices and a camera to capture the street scene. The video entry monitor allows the occupant to see who has called, talk to the visitor and open the door station

KEY BENEFITS

- Screening Visitors Before Allowing Access
- Ease of Communication
- Restrict Access to only Authorized Personnel
- Advanced Security
- Comfort and convenience
- Decrease in insurance premiums
- Easy to install and program
- Cost effective
- All-in-One access control solution



INSTALLTEC

PROJECT REFERENCE RESIDENTIAL



SKY GARDEN @ DIFC

Developer:

Al Mazaya Holding

Scope of Works:

ELV & Security Systems



MARINA SQUARE, AL REEM ISLAND AT ABU DHABI

Developer:

Al Reem Island

Scope of Works:

CO Detection & Monitoring System



MAG 318 - SERVICED APARTMENT

Developer:

MAG Group

Scope of Works:

SCS, CCTV, Gate Barrier, ACS,
ANPR System and Intercom



BUILDING NO: 09

Developer:

Select Group

Scope of Works:

Lighting Control System and Upgradation of CCTV system as per SIRA



G+10 CB02002, CB02003, CB02015 AZIZI PHASE II 3 BUILDINGS

Developer:

Azizi

Scope of Works:

SCS, CCTV, AV Intercom, ACS and Gate Barrier



DUBAI SOUTH RESIDENTIAL PROJECTS MAG 5

Developer:

MAG Group

Scope of Works:

SCS, CCTV, Gate Barrier, ACS, ANPR System and Intercom



BAY GATE TOWER AT BUSSINESS BAY

Developer:

Akar Properties

Scope of Works:

Fire Alarm System, Central battery system, CCTV, ACS, SCS, LCS, Parking barrier, PA, Air-craft warning light



DUBAI DESIGN DISTRICT (G+5, G+13, 11 BUILDINGS)

Developer:

Tecom Investments

Scope of Works:

BMS & Lift Intercom, SCS



I RISE TOWER

Developer:

Realty Capital

Scope of Works:

Structure cabling system.



INSTALLTEC

PROJECT REFERENCE COMMERCIAL



BUSINESS TOWER

Developer:

Damac Properties

Scope of Works:

BMS, Structure cabling system.



XL TOWER

Developer:

Damac Properties

Scope of Works:

Structure cabling system.



MAZAYA BUSINESS AVENUE

Developer:

Mazaya Holding

Scope of Works:

Structure cabling system.



INSTALLTEC

PROJECT REFERENCE CORPORATE OFFICES



MAG PD 26TH & 27TH FLOOR

Client:

MAG

Scope of Works:

ELV And Automation

MCL

MAG CONTAINER LINES

www.mcl.ae

MCL LOGISTICS @ SHARJAH

Client:

MAG

Scope of Works:

ELV And Automation



NMC HOSPITAL G+6, AL NAHDA

Scope of Works:

Electrical Works at generator room and LV room



CANADIAN SPECIALIST HOSPITAL

Scope of Works:

Canadian Specialist hospital
OPD Expansion - ELV System



ABBAR HOTEL AT DIP

Scope of Works:

BMS And ELV Systems



CEASERS PALACE LUXURY VILLA, BLUE WATERS, DUBAI

Scope of Works:

Lighting Control System



INSTALLTEC

PROJECT REFERENCE INDUSTRIAL



ZABEEL FEED MILL

Scope of Works:

BMS, LCS And Security
Systems



MR. ABDULLAH AL ARIF VILLA
PALM JUMERIAH, DUBAI.

Scope of Works:

Home Automation system
Security System
IT System



28 VILLAS
(G+1 TOWN HOUSE)
MIRDIFF

Scope of Works:

SCS And ELV



MANIPAL UNIVERSITY DUBAI CAMPUS

Scope of Works:

IT Infrastructure
Data Center
WiFi System
Security System
Gate Barrier



HERIOT WATT UNIVERSITY DUBAI CAMPUS

Scope of Works:

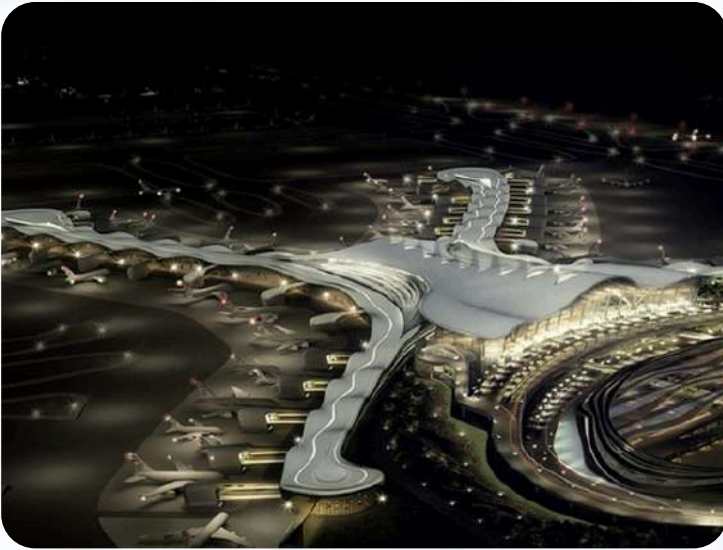
CCTV System



UNIVERSITY OF BIRMINGHAM

Scope of Works:

ELV System Installation

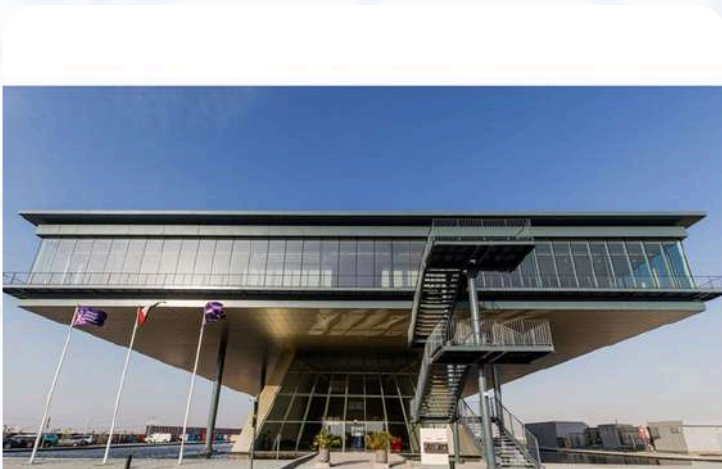


MID FIELD EXTENSION ABU DHABI AIRPORT

Scope of Works:

Outdoor underground fibre optic cable installation

PROJECT REFERENCE GOVERNMENT



KICK-OFF BUILDING DUBAI SOUTH

Scope of Works:

Structured Cabling

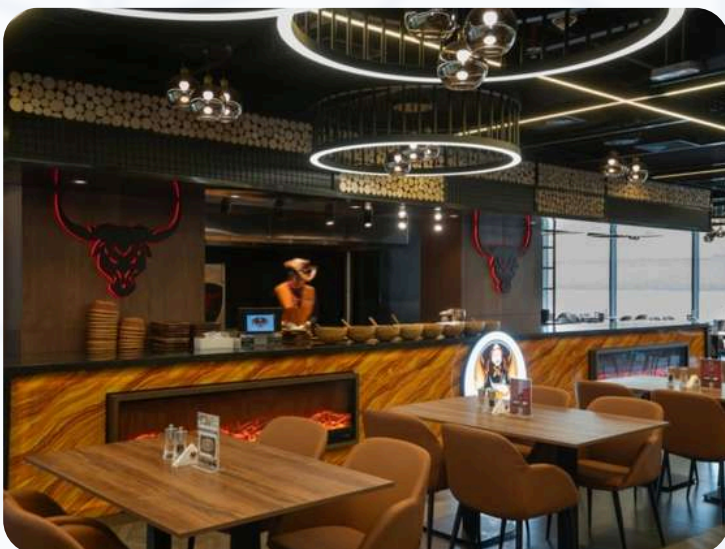
CCTV

Access Control



ATMOSPHERE RESTAURANT BURJ KHALIFA.

Scope of Works:
CCTV System



CHEF EYAD RESTAURANT, MIRDIFF

Scope of Works:
ELV System

Sr#	Project	Client	Consultant	Main Contractor	MEP Contractor	Scope of Work
1	NMC Hospital G+6, Al Nahda	NMC Health Care LLC	A2Z Architectural Engineering Consultant	G&B Contracting LLC	Modular Concepts	Electrical Works
2	Emergency Pipe line Repair Station AEPRS, KIZAD	Dolphin Energy	Bainona Engineering Consultancy	Hadeed Emirates Contracting	Tyco Fire & Safety	Low Current System
3	Dubai Marina Tower 52/42	Emaar Properties PJSC	Dewan Architects & Engineering	Sapoorji Pallonji Pvt Ltd	Sapoorji Pallonji Pvt Ltd	Electrical Works
4	P118 Proposed Labor Accommodation on Plot No: 5997417, Jabel Ali Industrial First	Meraas Estate LLC	Capital Engineering Consultancy	M/s. Taif Al madina Contracting LLC	M/s. Taif Al madina Contracting LLC	Low Current System
5	Mid Field Extension @Abu Dhabi Airport	Abu Dhabi Airport Company	ADAC	Al Yaseah Engineering	Power & Voltage Contracting	Civil & Electrical Works
6	Garden Tower and Garden City Substation	DEWA	Siemens	Siemens	EMCC Company	HVAC Works
7	Chocolate Warehouse	WESTZONE GROUP	Design & Built - Installtec	WESTZONE GROUP	Installtec	HVAC Works
8	Residential/Commercial Building on Plot No:598-132	Mr. Saeed Suhail Buti Mohammed Alayali	Align Consultant Engineering	M/s. Taif Al madina Contracting LLC	M/s. Taif Al madina Contracting LLC	Low Current System
9	Tamcon P69	AL BARQ CORPORATION FZCO	SpaceTech	M/s. Taif Al madina Contracting LLC	M/s. Taif Al madina Contracting LLC	Low Current System
10	MAG PD 26th & 27th Floor	MAG	MAG	Fujairah National Construction LLC	Fujairah National Construction LLC	Low Current System
11	Marina Square, Al Reem Island at Abu Dhabi	Al Reem Island	N/A	Tafawuq Facility Management	N/A	CO Detection & Monitoring System
12	Manipal University On Plot No G-04, Academic city, Dubai.	Manipal ETA FZ LLC(MEFL) Dubai.	Dubai Consultant	SAM Building Contracting	SAM Building Contracting	CCTV, Structured Cabling, WIFI & Networking System
13	The Agora - Jumeirah Mall	Arj Properties	VX Experts	Ghantoot Gulf Contracting	ARJ	Access control System & CCTV
14	B+G+1+Roof services commercial Building - Nadd Al Shiba	N/A	M/s.X-Architect & Design Consultant	M/s. Global Green Bridge Contracting LLC	N/A	Electrical, Low Current system & Plumbing System works
15	B+G+1+Roof services commercial Building - Al Quoz	N/A	M/s.X-Architect & Design Consultant	M/s. Global Green Bridge Contracting LLC	N/A	Electrical, Low Current system & Plumbing System works
16	28 Villas (G+1 Town House) -Mirdiff	N/A	M/s.ARC International Engineering Consultant	M/s. Zabeel Contracting LLC	N/A	Electrical, Low Current system & Plumbing System works
17	Air Port-2 Extension	N/A	M/s.Dar Al Handasa Engineering Consultant	M/s. ALEC LLC	N/A	Electrical System works
18	Rivington Heights, B+GF+7F+RF A Residential Building	Rivington Heights	Erga Progress Engineering	Al Ashram	Al Ashram	SCS/Audio Intercom
19	G+10 Residential Building	Rivera Holdings Limited	Al Saraya Engineering Consultancy	STEPCO	STEPCO	SCS
20	Park Hyatt, Diera - Maintenance	Park Hyatt	N/A	N/A	N/A	Heat source: Heat pump, 90 kw x 4 Storage capacity: 9000 Litres
21	G+M Office Building , Industrial Warehouses & Labor Accommodation	Meydan	Fujairah National Construction LLC	AE7	Tarkeez Electromechanical LLC	BMS & LCS
22	Mankhool Mixed Use Development Hotel Building	Abdul Wahid Al Rostamani	M/s Arif & Bintook	M/s Al Naboodah Construction Group LLC	M/s Trans Gulf Electromechanical LLC	Solar Hot Water Generation System

Sr#	Project	Client	Consultant	Main Contractor	MEP Contractor	Scope of Work
23	G+5, G+13, 11 buildings	Dubai Design District D3	IEMS	N/A	N/A	BMS & Lift Intercom, Structured Cabling
24	4B+G+9P+42F Commercial Office Tower, Business Bay	M/s. BAY GATE LLC, Sultan Investments	RAMBOLL Engineering Consultants	ANC Contracting LLC	ELEMEC Electromechanical Contracting LLC	Fire Alarm System, Central battery system, CCTV, Access control system, Structure cabling system, Lighting control system, Parking barrier, Public address, Air-craft warning light
25	2B+G+30 Story @ Al Nadha	Mr. H.H.Sheik Hamdan Bin Rashid Al Maktoum	M/s Torontec Engineering Consultant	M/s Al Habbai Contracting LLC	N/A	BMS, Lighting control, CCTV, Access control, Control panels, Digital signage
26	4B+G+44 Storey Building @ JLT, Dubai	Mr. Ahamed Abdullah Al Shafar	M/s Al Asri Engineering Consultant	M/s Al Shafar Transport & Contracting LLC	M/s. Power Point Elec.& Mech LLC	Low Current System
27	1 Rise Tower	Reality Capital Investment	M/s. Khatib & Alami Engg. Company	M/s. Al Nabodha Engineering	M/s. Trans Gulf Electromechanical LLC	Structure cabling system.
28	Business Tower	M/s DAMAC Properties	M/s Arcon Engineering Consultant	M/s CHSK Dubai Contracting LLC	M/s Bin shafar Electromechanical Engg.	BMS, Structure cabling system.
29	XL Tower	M/s DAMAC Properties	M/s COIN Incorporated Consultant	M/s CHSK Dubai Contracting LLC	M/s Bin Shafar Electro Mechanical Engg. LLC	Structure cabling system.
30	4B+G+M+3P+44 Stry.Commercial/Office 3 Towers	Mazaya Business Avenue	M/s. National Engineering Bureau	M/s. General Construction Company	M/s. Radiant Technical Works LLC.	Structure cabling system.
31	Tower51 @ Business Bay	Deyaar Property Development	Arex Consultant Engineering	ANC Contracting LLC	Sigma Engineering LLC	Structure cabling system.
32	Al Furjan Villas & Terrace Homes, Phase1, Package-1	Nakheel Properties	Shadid Engineering Consultant	Al Shafar Transport & Contracting LLC	PowerPoint LLC/Federal MEP JV	Electrical and ELV Systems
33	2B+G+M+Typical 6 Floors+ Gym Floor at Port Shaeed	Mr.Rasid Al Lootha	Hegazy Engineering Consultants	C Contracting LLC	Mazaya Emirates Electromechanical Works LLC	Structure cabling system.
34	B+G+2 Typical Floors at Plot 319,358 and 169 at Al Safa First	Mr.H.H. Sheikh Hamdan Al Maktoum	DAR / IBA	Al Hudaiba Contracting LLC	Beam Electromechanical Works LLC	Electrical and ELV Systems
35	B+G+7Parking+17 Typical + 1 Service Floor Commercial/Office Building, Plot No. C-008-003	Mr. Ali Abdullah Al Shafarecon	N/A	Al Shafar Contracting Co. LLC	N.R.G Technical Services LLC	Structure cabling system.
36	Sahara Living, 84-Nos Compound Villas, Dubai Industrial City.	M/s. Sahara Living	Dimension Consultant Engineering	Al Reem Dubai Contracting LLC	Aikah Electromechanical Works. LLC	Structure cabling system.
37	B+G+M+1 Commercial/Office Building Dubai Festival City	Mr. Salem Saeed Ghedayer Bin Ghedayer.	Adwar Consulting Engineer saresc	oN Contracting LLC	Naresco Contracting LLC	Structure cabling system.
38	B+G+M+3 Commercial/Office Building Al Karama	Mr. Abdul Rahim Al Attar Thuraiy	AACL Consulting engineers	Caterpillar Contracting LLC	Al Attar Electromechanical Works LLC	Electrical and ELV Systems
39	B+G+M+4 Commercial/Office Building Al Karama	DUBAI REAL ESTATE CENTER	Al Hudaiba Contracting LLC	Design Center	Power Point Electromechanical Works LLC	Electrical and ELV Systems
40	4B+G+3P+16 Stry Office Building, Business Bay	Sobha Ventures Limited	Sobha Contracting LLC	Dubai Consultants Engineering	Sobha Electromechanical Works LLC	Structure cabling system.
41	2B+G+13+Gym Floor Residential Building at TECOM, Dubai	Mr. Abdul Rahman Mohd Taher Wali.	Al Ajmi Engineering Consultants.	Naresco Contracting LLC	Naresco Contracting LLC	Electrical and ELV Systems
42	B+G+6+GYM, Residential Building at Al Raffa	Mr. Baqer Mohebi	M/s. GENERAL Construction Company GCC	M/s. NEB	M/s. Radiant Technical Works LLC	Etisalat FTTH Solution
43	B+G+3+GYM, Residential Building at Al Hudaiba	Mr. Baqer Mohebi	M/s. NEB	M/s. General Construction Company GCC	M/s. Radiant Technical Works LLC	Etisalat FTTH Solution
44	City Season Hotel, Bur dubai	N/A	M/s James Cubitt & Partners	M/s Dubai Civil Engineering	N/A	Heat source: Electrical, 150 kw x 2 Storage capacity: 600 gallons Heat source: Solar system, 105 Panels

Sr#	Project	Client	Consultant	Main Contractor	MEP Contractor	Scope of Work
45	Premier Inn Hotel, Ibn Battuta	N/A	M/s Arch Group	M/s United Engineering Construction Co L.L.C	M/s Conversion Electromechanical	Heat Pumps: 250 kw x 2 Storage capacity: 3500 x 3 with electrical backUp
46	MAG 318 - Serviced Apartment	MAG Development	N/A	N/A	N/A	SCS, CCTV, Gate Barrier, ACS, ANPR System,
47	Dubai South Residential Projects	MAG Development	N/A	M/s Ghantoot	N/A	SCS, CCTV, Gate Barrier
48	University of Birmingham	University of Birmingham	N/A	Khan Sahib	BK Gulf	IT Network and Security System Installation
49	Kick-off Building, Dubai South	Dubai Global Conenct	Dar	Beaver Gulf	Beaver Gulf	CCTV, SCS
50	Nshama Community Mall	Sami Said al Alangari	Spacetech	Beaver Gulf	Beaver Gulf	CCTV
51	G+4F Labour Camp	Beaver Gulf	Spacetech	Beaver Gulf	Beaver Gulf	CCTV
52	G+10 CB02002, CB02003, CB02015 Azizi Phase II - 3 Buildings	Azizi Development	360Degree	Gardenia Building contracting	Al Andulus Power Mechanical	SCS, CCTV, AV Intercom, ACS and Gate Barrier
53	G+5+R	Al Ghurair Properties	Eng. Al Shaikh Mubarak	Al Ashram Contracting	Al Andulus Power Mechanical	ACS
54	Harbour Creek	Emaar	KEO International Consultant	ASGC	SEMCO	SCS and Fiber Backbone
55	Canadian Specialist Hospital	Buset Contracting & general transport LLC	N/A	N/A	EMCC Electromechanical credible contractor	ELV System
56	Proposed B+G+2 Villa on Plot No: PJFRN054, Palm Jumeriah, Dubai.	Mr. Abdullah Abdul karim Al Arif	Chawla Architectural & Consulting Engineers P.O. Box 281, Dubai, UAE.	Naresco Contracting LLC	Al Madaen Electromechanical Works Co (LLC)	Home Automation system
57	B-088 – Residential building (G +1 st Floor+3 Typical Floor+Roof) on Plot No. 643-0296 at Liwan 2, Dubai, UAE.	Mrs. Jamila Rashed Mohammed Ali Al Falasi	M/s Eng. Mohd. Al Shaikh Mubarak Architectural & Engineering Consultant, P.O. Box 4307, Dubai, U.A.E.	Buset Contracting & general transport LLC	N/A	Gate barrier system
58	Proposed 1B+GF+8 Floors Residential Building on Plot No. 022-025, Dubai Silicon Oasis, Dubai, UAE.	Coral residence	N/A	Deyaar Development	Deyaar Facility Management LLC	ELV System
59	Proposed 1B+G+8+R Storey Residential building on Plot No: 022-013, Dubai Silicon Oasis, Dubai, UAE.	Jade Residence	N/A	Deyaar Development	Deyaar Facility Management LLC	ELV System
60	Proposed 1B+G+8 Storey Residential Building On Plot No: 021-004, Dubai Silicon Oasis, Dubai, UAE.	Ruby Residence	N/A	Deyaar Development	Deyaar Facility Management LLC	ELV System
61	Proposed 1B+G+8 Storey Residential Building On Plot No: 021-006, Dubai Silicon Oasis, Dubai, UAE.	Sapphire Residence	N/A	Deyaar Development	Deyaar Facility Management LLC	ELV System



INSTALLTEC

06

CERTIFICATES



مؤسسة تنظيم الصناعة الأمنية
SECURITY INDUSTRY REGULATORY AGENCY



THANK YOU



CONTACT US



+971 4 23 44999



www.installtecuae.com



sales@installtecuae.com
mohamed.haja@installtecuae.com



ASCON House, Office No 127
Salah Al Din Road, Deira, Dubai,
United Arab Emirates

