



Contact Us

P : +971 5641 10579
+971 5458 22133

E : mohamed.haja@installtecuae.com
estimation@installtecuae.com
sales@installtecuae.com
w : www.installtecuae.com

1st Floor, #127, ASCON House,
Near Salah Al Din Road,
Dubai, U.A.E, P.O. Box: 47653
Phone: 0 4 23 44999,



INSTALLTEC
ELECTROMECHANICAL LLC

www.installtecuae.com

COMPANY PROFILE

We Installtec Electromechanical is a well known Systems and Solutions provider for the Residential, commercial and Industrial sector for Premise network, Security and other Low current installations.

Our Mechanical division offers turnkey solutions for steam, domestic / process water heating and cooling applications for industrial, commercial & residential sectors.

We also focus on energy saving products like air cooling pads, solar applications, heat pumps & innovative energy saving products. Our strong partnership with leading system manufacturers and industrial organization provides us confidence and know how to cater our target sector.

We have executed many prestigious and large projects. Our cost effective solutions with exceptional customer support is our main ingredient of success in this competitive Electro mechanical construction industry.

Our well qualified and experienced team always wins the confidence of our clients with their exceptional Pre Sales and Post Sales support to our valuable clients, we first understand the specific requirements, then develop the customized technology solution by carefully selecting the right mix of products.

We offer turnkey solution with all of the following services: Design, Engineering, Supply, Installation and Testing/ Commissioning and maintenance.



THE CONTENT

About company	04
Organization Chart	05
Industrial we cater to	06
Project Reference	21

ABOUT COMPANY

Installtec Electromechanical LLC has been working in the area of ICT, Electrical, Automation and Electromechanical works, etc. The company has industry certified and well experienced engineers that have been working on designing and installation of high-tech solutions.

We have been well-known Systems and Solutions provider for the Residential, commercial and Industrial sector for Premise network, Security and other Low current installations.

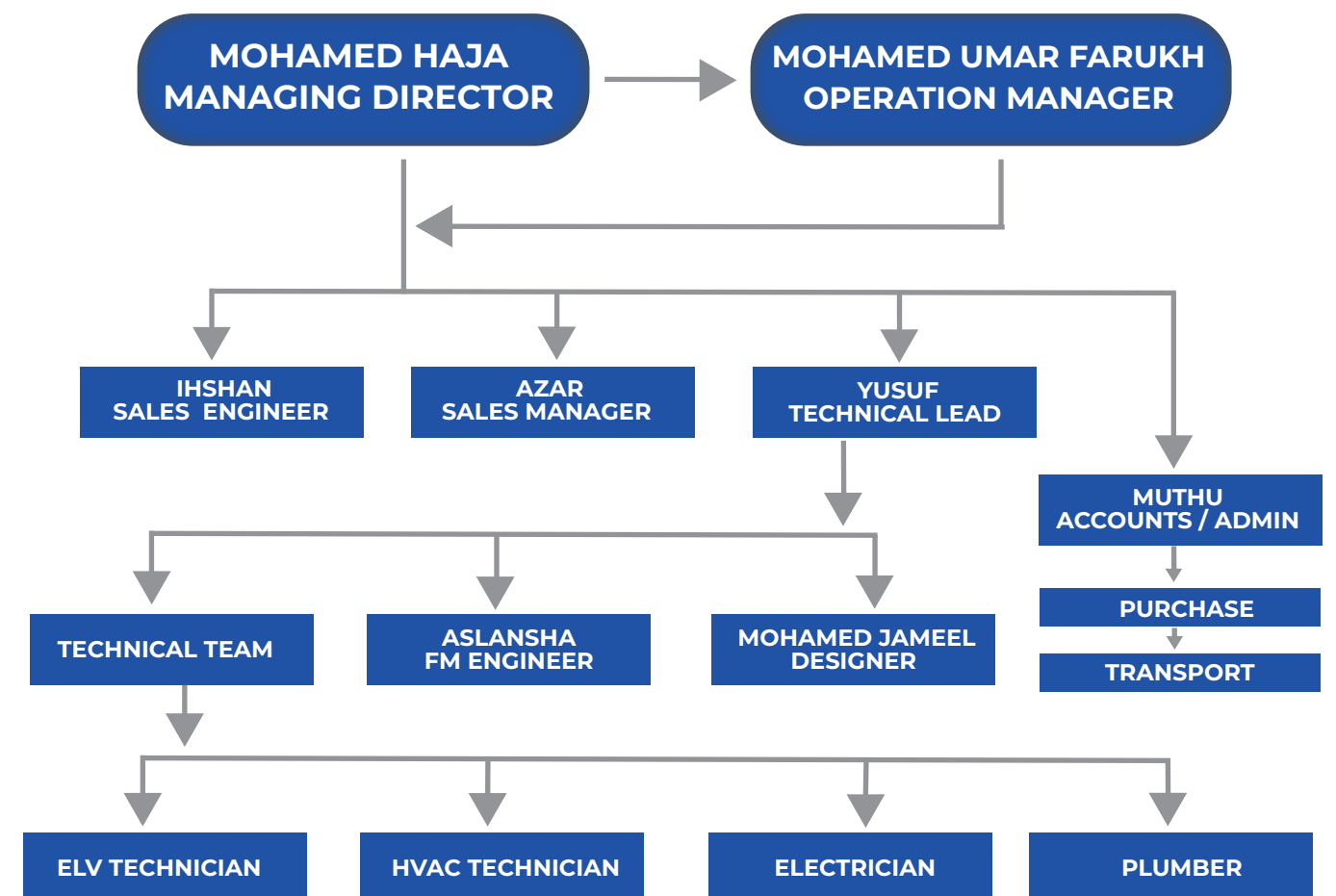
We are SIRA registered CCTV installation contractor. Our Mechanical division offers turnkey solutions for steam, domestic / process water heating and cooling applications for industrial, commercial & residential sectors. We also focus on energy saving products like air cooling pads, solar applications, heat pumps & innovative energy saving products.

We offer turnkey solution with all of the following services: Design, Engineering, Supply, Installation and Testing/ Commissioning and maintenance.

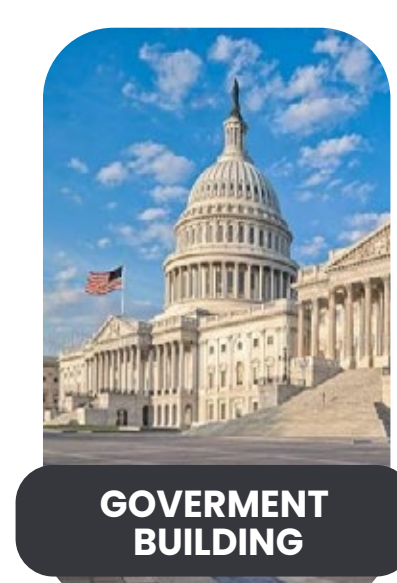
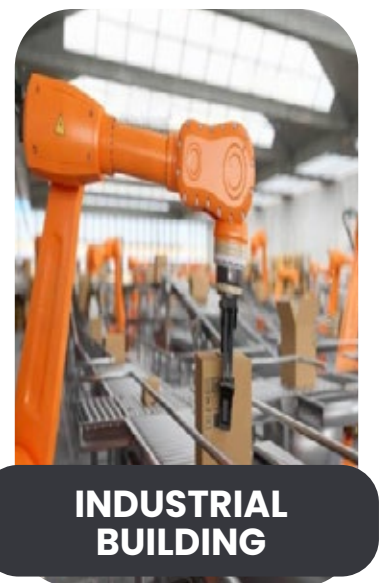
Our strong partnership with leading system manufacturers and industrial organization provides us confidence and know how to cater our target sector. We executed Projects in UAE, Saudi Arabia, Ethiopia and Uganda.



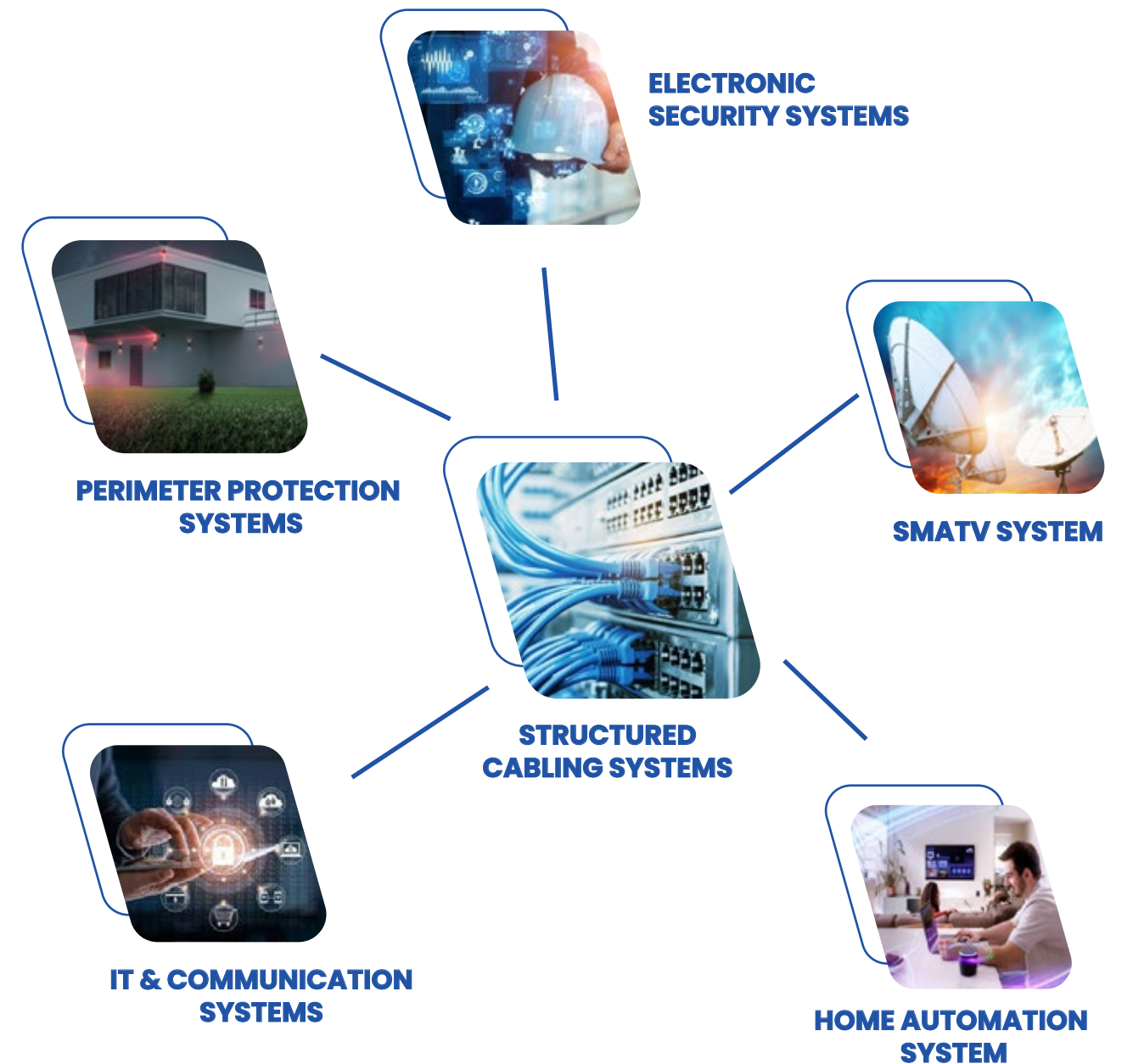
INSTALLTEC ORGANIZATION STRUCTURE



INDUSTRIES WE CATER TO



PRODUCTS SOLUTIONS SERVICES



ELECTRONIC SECURITY SYSTEMS



VIDEO SURVEILLANCE / CCTV SYSTEM

Continuous monitoring is protecting given the increasing security threats in the modern world. Video Surveillance systems transforming the way how organizations, corporates, enterprises, institutions, property & facility managers are protecting their assets. We could offer wide range of complete video surveillance solutions which includes but not limited to Analog & IP Cameras, NVRs, DVRs and Video Management Software which will maximize the benefits of network video solutions through an integrated management platform whilst minimizing the complexity and will also meet the geographical standards and guidelines been set by authorities & regulators.

ANPR (AUTOMATIC NUMBER PLATE RECOGNITION) SYSTEM

Automatic Number Plate Recognition (ANPR) solution will be implemented with an intention to capture the number plates of vehicles getting into various secured premises and this solution can be applied to both low and high-speed applications. The ANPR software allows for the identification and capturing of number plate information via cameras and back end algorithms and get stored in secured internal databases.

Key Benefits

- Ensure maximum security.
- Deny unauthorized access.
- Ability to capture information regardless of speed or light conditions.
- High definition images for identification with event logs thus provides 24/7 access to users.



ACCESS CONTROL SYSTEM

Access control systems are most commonly used to control entry into exterior doors of buildings and may also be used to control access into certain areas located within the interior of buildings. The purpose of an access control system is to provide quick, convenient access to those persons who are authorized, while at the same time, restricting access to unauthorized people.

Key Benefits

- Restricted access to premises.
- Complete transaction monitoring.
- No undetected strangers.
- Increase safety & ensure security.
- Reduce theft and accidents.
- Reduce chaos of after-hour shifts.



TIME & ATTENDANCE MANAGEMENT

Manual attendance marking and estimation leads to the expenditure of time and cost of the organizations. Human errors, buddy punching and fraudulent time keeping are additional hidden expenses which directly affects the productivity of any organizations. Variation in attendance policies from one company to another makes it extremely challenging to capture time-attendance data and automate them. Therefore, a fully automated time-attendance management software is paramount for enhancing productivity of any organization.

Key Benefits

- User wise real time monitoring & marking.
- Manage Multiple Shifts and Overnight Shift Effectively.
- Centralized Time Attendance Management of Multiple Locations.
- Schedule Reports for Convenience.
- Accurate and Timely Salary Data for Payroll.



INTRUSION DETECTION & ALARM SYSTEM



Intrusion Detection & Alarm is a system designed to detect intrusion unauthorized entry into a building or other area. Security alarms are used in residential, commercial, industrial, and military properties for protection against burglary (theft) or property damage, as well as personal protection against intruders. Intrusion alarm system consists of one or more sensors to detect intruders, and an alerting device to indicate the intrusion. Some alarm systems serve a single purpose of burglary protection systems provide both fire and intrusion protection. Intrusion alarm systems may also be combined with closed circuit television surveillance (CCTV) systems to automatically record the activities of intruders, and may interface to access control systems for electrically locked doors. Systems range from small, self-contained noise makers, to complicated, multi area systems with computer monitoring and control. It may even include two-way voice which allows communication between the panel and Monitoring station.

System components

- Alarm Control Panel
- Sensors
- Alerting devices
- Keypads
- Central Monitoring System

Key Benefits

- Constant Protection
- Strong Deterrent
- Uninterrupted Functionality
- Can Relocate
- Centralized Monitoring

AUDIO & VIDEO INTERCOM SYSTEM



Audio & Video door phone also known as Intercom is a stand-alone communication system used to manage calls made at the entrance to a building (residential complex, detached family home, work place, etc.) with access controlled by audio-visual communication between the inside and outside. Video door entry consists of both outside and indoor elements. An outdoor panel is placed on outside entrance with an electronic lock release and an indoor monitor. The outdoor panel or street panel is installed beside the entrance door or gateway and incorporates different elements suitable to be in any climate conditions. One or several push buttons to make the call (usually one per home or apartment), a micro camera adapted for night vision to capture the image of the caller, a microphone to pick up their voice and a speaker to reproduce the voice of the indoor occupant. A video door entry panel may include push buttons to call the homes or offices and a camera to capture the street scene. The video entry monitor allows the occupant to see who has called, talk to the visitor and open the door station.

Key Benefits

- Screening Visitors Before Allowing Access
- Ease of Communication
- Restrict Access to only Authorized Personnel
- Advanced Security
- Comfort and convenience
- Decrease in insurance premiums
- Easy to install and program
- Cost effective
- All-in-One access control solution

PERIMETER PROTECTION SYSTEMS

FLAP BARRIERS



Flap barriers as the name reflects has retractable flaps which allows or denies the entrance of a person who is attempting to gain access to the premises. Flap barriers will be integrated with Access Control System to make sure authorized personnel's / only valid card holders are allowed inside the premises. It's a perfect way to ensure security in a place where there is a huge flow of people. Entrances like Zoo, Parks, Airports, Metro Stations, Corporate Offices, Banks are some of the common places where we can use Flap barriers.

Key Benefits

- Enhanced personnel security within the premises
- Authorized traffic inflow and outflow of people
- Reduce security breach & incidence by restricting the entry of unauthorized entrant

BOOM BARRIERS

Boom barriers are ideal for perimeter protection. It is also known as a boom gate, a bar, or pole pivoted to allow the boom to block vehicular access through a controlled point. Its reliable mechanism and compact control unit designed to meet wide range of industrial, commercial and residential application. It provides secure and convenient solution for vehicle transits from / to restricted areas. Boom barriers can be integrated with any access control devices like parking system, toll systems, RFID and access readers.

Key Benefits

- Improved perimeter security
- Reliable & effective traffic flow & regulation
- Secure solution for vehicle movement



METAL DETECTOR

Door Frame Metal Detectors (DFMD) / Walk Through Metal Detectors (WTMD) & Hand Held Metal Detectors (HHMD) are applied in situations from the inspection of visitors to that of intimates in top security check points, even in areas with strong electrical and mechanical interferences. Sophisticated threat detection & high passenger flow rates today require enhanced metal detection to ensure safety & security. These units are widely used in Airports, Hotels, Schools & Building Security, Loss prevention and Event Security.

Key Benefits

- High safety and high sensitivity
- Detection zone of it is quite wide
- Resist external interferences and avoid false alarms
- Count the number of people passed and the number of alarm precisely

BOLLARDS

Bollards are metal structures used to restrict access, improve security, and landscape property. Typically bollards are used to protect pedestrians, buildings, industrial units, high security areas & arenas from vehicle attacks. There are many variants which includes Automatic Retractable Bollards, Removable Bollards, Fixed Bollards and Posts and the clients option as per requirement. These bollards will meet the technical and aesthetic standards and security needs of clients and bollards can be integrated with Access Control Systems.

Key Benefits

- Enhanced perimeter security
- Protect building and people from organized vehicle attacks
- Orderliness & cleanliness



BUILDING MANAGEMENT SYSTEM

Building management system (#bms) also known as a building automation system (#bas) refers to a computer-based control system that needs to be installed within buildings to monitor and regulate the building's electrical and mechanical equipment such as power system, lighting, and ventilation to confirm sustainability. A BMS needs to be set up because they are critical elements to intelligently manage the energy demand, for example, electrical system, plumbing, fire alarm system, heating ventilation, air-conditioning (HVAC), electric power control, and illumination control. Compared to uncontrolled buildings, a BAS reduces building energy and costs of maintenance, hence most industrial, institutional, and commercial buildings constructed after 2000 include a BMS that should be restructured for a timeworn building. When proprietary procedures were used in homes, industrial and commercial buildings must have in history depended on healthy recognized procedures such as BACnet.



LIGHTING & CURTAIN CONTROL



We offers the best control solutions for all kinds and sizes of motorized curtains, blinds, lighting equipment's which includes switching, dimming and connect them to the intelligent home network. Intelligent switches and remote controls can be used to control lights, the curtains and blinds in different ways, ranging from simple open/close and on/off commands to predefined settings stored in the system.

By integrating the curtain and blind control to the intelligent network it is possible to combine the control of light and air conditioning with the curtain control and define various scenes and scenarios. When these scenes and scenarios are defined, users can recall them by pressing just one key on the remote control or the intelligent switch.

Key Benefits

- Intelligent management of energy consumption, which leads to savings
- Increasing the lifetime of the equipment's
- Adding comfort and ease of use

HOME AUTOMATION SYSTEMS



AIR CONDITIONING

Air-conditioning and cooling systems are vital part of every building in the Middle East. Different systems like fan coils, air handling units, heating, air conditioning and ventilation systems, chillers, spilt units, split ducts and so on, are being used to scope with the required specifications. Each of these systems needs to be controlled appropriately to save energy and provide the proper temperature conditions. Intelligent control systems are needed to apply the appropriate control to the system not only to use the energy optimally but also to provide the most comfortable environment.

Key Benefits

- Energy efficient
- Controllable comfort
- Reduces Humidity
- Improves air quality
- Silent operation
- Protects business critical equipment

SMART DOOR LOCK

Smart locks that supplement or replace your front door deadbolt do much more than lock and unlock your door without a key. Smart locks let you receive alerts and track who's entering and leaving your residence email limited access digital "keys" to visitors, children, trusted service workers or guests when you're not at home; and remotely lock and unlock when you're away from home. Smart locks run on batteries and these batteries last between six months to a year, and flashing lights on the lock or a smartphone alert let you know if the batteries need replacing.

Key Benefits

- Increased convenience by replacing the keys
 - No more lost, spare and forgotten keys
 - Improved Security
 - Heightened connectivity
 - Remote monitoring and control through Apps.
- Electronically interlinked & integrated with Security Systems



IT & COMMUNICATION SYSTEMS



WIFI ACCESS POINTS

In computer networking, a wireless access point (WAP), or more generally just access point (AP), is a networking hardware device that allows a WiFi device to connect to a wired network. The AP usually connects to a router (via a wired network) as a standalone device, but it can also be an integral component of the router itself. An AP is differentiated from a hotspot, which is the physical location where WiFi access to a WLAN is available.

Key Benefits

- Broader range of transmission
- More users access
- Flexible networking
- Multi-AP interconnection

SERVERS & DESKTOPS

Servers are often dedicated, meaning that they perform no other tasks besides their server tasks. Different servers do different jobs, from serving email and video to protecting internal networks and hosting Web sites. We could source genuine servers, desktops, laptops and other related IT accessories as per requirements at a competitive cost from reliable sources / product partners / manufactures.



NETWORK COMPONENTS

Switches are primary backbone of any IT infrastructure irrespective of business segments. We could offer wide range of switches (Edge & Core), Fiber Optic Network Components & other networking accessories which will meet your technical requirements at attractive pricing. We do supply switches for the following verticals.

- Enterprise
- Small & Medium Businesses
- Industrial



TELEPHONE SYSTEMS



PBX & PABX are most known telephone systems widely used by many organizations, enterprises & institutions. A private automatic branch exchange (PABX) is an automatic telephone switching system within a private enterprise. The users of the PBX can communicate internally (within their company) and externally (with the outside world), using different communication channels like Voice over IP, ISDN or analog.

A PABX also allows you to,

- Have more phones than physical phone lines Allows free calls between users
- It provides features like transfers, voicemail, call recording, interactive voice menus (IVRs) and call queues.

SMATV FOR HOTELS & MULTIDWELLINGS



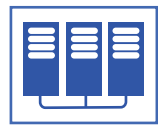
SMATV is Single Master Antenna Television or Satellite Master Antenna Television. The purpose of SMATV is for supplying and controlling the number and type of channels to multiple televisions. Not only TV channels but FM channels as well.

It provides Reception of Direct Broadcast Satellite (DBS) TV/FM channels for hotels, motels, dormitories, hospitals and commercial properties with multiple tenants. Using a master antenna system video signals, audio signals and decoder signals can also be distributed. SMATV is primarily used in two business verticals namely Hospitality & Multidwellings.

Key Benefits

- One discrete headend – distribute satellite, digital terrestrial and radio signals from a single location
- A system to cover large areas without jeopardising signal and quality
- Tenants and landlords enjoy high quality and maximum flexibility
- Deliver Video On Demand, targeted information & offers

STRUCTURED CABLING SYSTEMS



Data centers



Offices - Small, Medium & Large Scale



Commercial developments



Manufacturing units and plants



Residential apartments



Mixed use developments

Structured cabling system is a complete system of cabling and associated hardware, which provides a comprehensive telecommunications infrastructure that integrates voice, data and video services.

This infrastructure serves a wide range of uses, such as to provide telephone service or transmit data through a computer network. Structured cabling design and installation is governed by a set of standards that specify wiring standards for various entities.

We could offer complete SCS solutions which includes but not limited to the indicated verticals here with. We further define a structured cabling system in terms of ownership.

The structured cabling system begins at the point where the service provider (SP) terminates.

This point is the point of demarcation (demarc) or Network Interface Device (NID). For example, in a telephone system installation, the SP furnishes one or more service lines (per customer requirements). The SP connects the service lines at the point of demarcation.

Every structured cabling system is unique. This is due to variations in:

- The architectural structure of the building, which houses the cabling installation
- The cable and connection products
- The function of the cabling installation
- The types of equipment the cabling installation will support -- present and future
- The configuration of an already installed system (upgrades and retrofits)

There are many industry accepted institutions & governing bodies which are responsible or providing and maintaining standards and practices within the profession. It has published a series of standards to design, install, and maintain cabling installations to ensure a proper cabling installation.

Key benefits of these standards include:

- Consistency of design and installation
- Conformance to physical and transmission line requirements
- A basis for examining a proposed system expansion and other changes maintaining uniformity.

ANNUAL MAINTENANCE CONTRACTS



Our Annual Maintenance Services provide our clients with comprehensive support plans to address requirements of managing our client's - Extra Low Voltage Systems, IT infrastructure and other structural backbone systems installed in the premises. Moreover, our services are fully customizable – and we can create a support plan just as required by our clients. We could offer Comprehensive & Non-Comprehensive maintenance contracts based on systems aging, wear & tear factors. Our several years of expertise in providing support services helps us deliver SLA based Annual Maintenance Services for Electronics Security Systems, Physicals Security Systems, Home Automation Systems, Desktops, Laptops, Server systems, Storage systems, Networking products and other peripherals regardless of your OEM brand. What's more, we are an authorized and approved security systems service provider by "Security Industry Regulation Authority (SIRA), Dubai". We will meet the highest service standards dictated by SIRA through strong commitment to customer satisfaction and continuous improvement.

Our Maintenance Services include:

- CCTV / Video Surveillance System
- Access Control System
- Time & Attendance Management System
- Audio & Video Intercom
- Physical Security Systems
- Smart Home Automation Systems
- Lighting & Curtain Control Systems
- Air Conditioning Monitoring & Control Systems for Villas
- SMATV System
- IT & Communication Infrastructure

Key Benefits

- AMC services saves from unexpected maintenance and repair cost
- Clients can avail the systematically & timely executed annual maintenance contract services that also renders rounds the clock maintenance & repair from qualified technicians and support staff.
- Provides the clients with effective advantages of planning of the maintenance and repair services at regular intervals of time which will increase the efficiency of the products.
- Enables the clients with only the genuine spare parts for better performance and durability.

PROJECT REFERENCE

Sr#	Project	Client	Consultant	Main Contractor	MEP Contractor	Scope of Work
1	NMC Hospital G+6, Al Nahda	NMC Health Care LLC	A2Z Architectural Engineering Consultant	G&B Contracting LLC	Modular Concepts	Electrical Works
2	Emergency Pipe line Repair Station AEPRS, KIZAD	Dolphin Energy	Bainona Engineering Consultancy	Hadeed Emirates Contracting	Tyco Fire & Safety	Low Current System
3	Dubai Marina Tower 52/42	Emaar Properties PJSC	Dewan Architects & Engineering	Sapoorji Pallonji Pvt Ltd	Sapoorji Pallonji Pvt Ltd	Electrical Works
4	P118 Proposed Labor Accommodation on Plot No: 5997417, Jabel Ali Industrial First	Meraas Estate LLC	Capital Engineering Consultancy	M/s. Taif Al madina Contracting LLC	M/s. Taif Al madina Contracting LLC	Low Current System
5	Mid Field Extension @Abu Dhabi Airport	Abu Dhabi Airport Company	ADAC	Al Yaseah Engineering	Power & Voltage Contracting	Civil & Electrical Works
6	Garden Tower and Garden City Substation	DEWA	Siemens	Siemens	EMCC Company	HVAC Works
7	Chocolate Warehouse	WESTZONE GROUP	Design & Built - Installtec	WESTZONE GROUP	Installtec	HVAC Works
8	Residential/Commercial Building on Plot No:598-132	Mr. Saeed Suhail Buti Mohammed Alayali	Align Consultant Engineering	M/s. Taif Al madina Contracting LLC	M/s. Taif Al madina Contracting LLC	Low Current System
9	Tamcon P69	AL BARQ CORPORATION FZCO	SpaceTech	M/s. Taif Al madina Contracting LLC	M/s. Taif Al madina Contracting LLC	Low Current System
10	MAG PD 26th & 27th Floor	MAG	MAG	Fujairah National Construction LLC	Fujairah National Construction LLC	Low Current System
11	Marina Square, Al Reem Island at Abu Dhabi	Al Reem Island	N/A	Tafawuq Facility Management	N/A	CO Detection & Monitoring System
12	Manipal University On Plot No G-04, Academic city, Dubai.	Manipal ETA FZ LLC(MEFL) Dubai.	Dubai Consultant	SAM Building Contracting	SAM Building Contracting	CCTV, Structured Cabling, WIFI & Networking System
13	The Agora - Jumeirah Mall	Arj Properties	VX Experts	Ghantoot Gulf Contracting	ARJ	Access control System & CCTV
14	B+G+1+Roof services commercial Building - Nadd Al Shiba	N/A	M/s.X-Architect & Design Consultant	M/s. Global Green Bridge Contracting LLC	N/A	Electrical, Low Current system & Plumbing System works
15	B+G+1+Roof services commercial Building - Al Quoz	N/A	M/s.X-Architect & Design Consultant	M/s. Global Green Bridge Contracting LLC	N/A	Electrical, Low Current system & Plumbing System works
16	28 Villas (G+1 Town House) -Mirdiff	N/A	M/s.ARC International Engineering Consultant	M/s. Zabeel Contracting LLC	N/A	Electrical, Low Current system & Plumbing System works
17	Air Port-2 Extension	N/A	M/s.Dar Al Handasa Engineering Consultant	M/s. ALEC LLC	N/A	Electrical System works
18	Rivington Heights, B+GF+7F+RF A Residential Building	Rivington Heights	Erga Progress Engineering	Al Ashram	Al Ashram	SCS/Audio Intercom
19	G+10 Residential Building	Rivera Holdings Limited	Al Saraya Engineering Consultancy	STEPCO	STEPCO	SCS
20	Park Hyatt, Diera - Maintenance	Park Hyatt	N/A	N/A	N/A	Heat source: Heat pump, 90 kw x 4 Storage capacity: 9000 Litres
21	G+M Office Building , Industrial Warehouses & Labor Accommodation	Meydan	Fujairah National Construction LLC	AE7	Tarkeez Electromechanical LLC	BMS & LCS
22	Mankhool Mixed Use Development Hotel Building	Abdul Wahid Al Rostamani	M/s Arif & Bintook	M/s Al Naboodah Construction Group LLC	M/s Trans Gulf Electromechanical LLC	Solar Hot Water Generation System

Sr#	Project	Client	Consultant	Main Contractor	MEP Contractor	Scope of Work
23	G+5, G+13, 11 buildings	Dubai Design District D3	IEMS	N/A	N/A	BMS & Lift Intercom, Structured Cabling
24	4B+G+9P+42F Commercial Office Tower, Business Bay	M/s. BAY GATE LLC, Sultan Investments	RAMBOLL Engineering Consultants	ANC Contracting LLC	ELEMEC Electromechanical Contracting LLC	Fire Alarm System, Central battery system, CCTV, Access control system, Structure cabling system, Lighting control system, Parking barrier, Public address, Air-craft warning light
25	2B+G+30 Story @ Al Nadha	Mr. H.H.Sheik Hamdan Bin Rashid Al Maktoum	M/s Torontec Engineering Consultant	M/s Al Habbai Contracting LLC	N/A	BMS, Lighting control, CCTV, Access control, Control panels, Digital signage
26	4B+G+44 Storey Building @ JLT, Dubai	Mr. Ahamed Abdullah Al Shafar	M/s Al Asri Engineering Consultant	M/s Al Shafar Transport & Contracting LLC	M/s. Power Point Elec.& Mech LLC	Low Current System
27	I Rise Tower	Reality Capital Investment	M/s. Khatib & Alami Engg. Company	M/s. Al Nabodha Engineering	M/s. Trans Gulf Electromechanical LLC	Structure cabling system.
28	Business Tower	M/s DAMAC Properties	M/s Arcon Engineering Consultant	M/s CHSK Dubai Contracting LLC	M/s Bin shafar Electromechanical Engg.	BMS, Structure cabling system.
29	XL Tower	M/s DAMAC Properties	M/s COIN Incorporated Consultant	M/s CHSK Dubai Contracting LLC	M/s Bin Shafar Electro Mechanical Engg. LLC	Structure cabling system.
30	4B+G+M+3P+44 Stry.Commercial/Office 3 Towers	Mazaya Business Avenue	M/s. National Engineering Bureau	M/s. General Construction Company	M/s. Radiant Technical Works LLC.	Structure cabling system.
31	Tower51 @ Business Bay	Deyaar Property Development	Arex Consultant Engineering	ANC Contracting LLC	Sigma Engineering LLC	Structure cabling system.
32	Al Furjan Villas & Terrace Homes, Phase1, Package-1	Nakheel Properties	Shadid Engineering Consultant	Al Shafar Transport & Contracting LLC	PowerPoint LLC/Federal MEP JV	Electrical and ELV Systems
33	2B+G+M+Typical 6 Floors+ Gym Floor at Port Shaeed	Mr.Rasid Al Lootha	Hegazy Engineering Consultants	C Contracting LLC	Mazaya Emirates Electromechanical Works LLC	Structure cabling system.
34	B+G+2 Typical Floors at Plot 319,358 and 169 at Al Safa First	Mr.H.H. Sheikh Hamdan Al Maktoum	DAR / IBA	Al Hudaiba Contracting LLC	Beam Electromechanical Works LLC	Electrical and ELV Systems
35	B+G+7Parking+17 Typical + 1 Service Floor Commercial/Office Building, Plot No. C-008-003	Mr. Ali Abdullah Al Shafarecon	N/A	Al Shafar Contracting Co. LLC	N.R.G Technical Services LLC	Structure cabling system.
36	Sahara Living, 84-Nos Compound Villas, Dubai Industrial City.	M/s. Sahara Living	Dimension Consultant Engineering	Al Reem Dubai Contracting LLC	Aikah Electromechanical Works. LLC	Structure cabling system.
37	B+G+M+1 Commercial/Office Building Dubai Festival City	Mr. Salem Saeed Ghedayer Bin Ghedayer.	Adwar Consulting Engineer saresc	oN Contracting LLC	Naresco Contracting LLC	Structure cabling system.
38	B+G+M+3 Commercial/Office Building Al Karama	Mr. Abdul Rahim Al Attar Thuraiy	AACL Consulting engineers	Caterpillar Contracting LLC	Al Attar Electromechanical Works LLC	Electrical and ELV Systems
39	B+G+M+4 Commercial/Office Building Al Karama	DUBAI REAL ESTATE CENTER	Al Hudaiba Contracting LLC	Design Center	Power Point Electromechanical Works LLC	Electrical and ELV Systems
40	4B+G+3P+16 Stry Office Building, Business Bay	Sobha Ventures Limited	Sobha Contracting LLC	Dubai Consultants Engineering	Sobha Electromechanical Works LLC	Structure cabling system.
41	2B+G+13+Gym Floor Residential Building at TECOM, Dubai	Mr. Abdul Rahman Mohd Taher Wali.	Al Ajmi Engineering Consultants.	Naresco Contracting LLC	Naresco Contracting LLC	Electrical and ELV Systems
42	B+G+6+GYM, Residential Building at Al Raffa	Mr. Baqer Mohebi	M/s. GENERAL Construction Company GCC	M/s. NEB	M/s. Radiant Technical Works LLC	Etisalat FTTH Solution
43	B+G+3+GYM, Residential Building at Al Hudaiba	Mr. Baqer Mohebi	M/s. NEB	M/s. General Construction Company GCC	M/s. Radiant Technical Works LLC	Etisalat FTTH Solution
44	City Season Hotel, Bur Dubai	N/A	M/s James Cubitt & Partners	M/s Dubai Civil Engineering	N/A	Heat source: Electrical, 150 kw x 2 Storage capacity: 600 gallons Heat source: Solar system, 105 Panels

Sr#	Project	Client	Consultant	Main Contractor	MEP Contractor	Scope of Work
45	Premier Inn Hotel, Ibn Battuta	N/A	M/s Arch Group	M/s United Engineering Construction Co L.L.C	M/s Conversion Electromechanical	Heat Pumps: 250 kw x 2Storage capacity: 3500 x 3 with electrical backUp
46	MAG 318 - Serviced Apartment	MAG Development	N/A	N/A	N/A	SCS, CCTV, Gate Barrier, ACS, ANPR System,
47	Dubai South Residential Projects	MAG Development	N/A	M/s Ghantoot	N/A	SCS, CCTV, Gate Barrier
48	University of Birmingham	University of Birmingham	N/A	Khan Sahib	BK Gulf	IT Network and Security System Installation
49	Kick-off Building, Dubai South	Dubai Global Conenct	Dar	Beaver Gulf	Beaver Gulf	CCTV, SCS
50	Nshama Community Mall	Sami Said al Alangari	Spacotech	Beaver Gulf	Beaver Gulf	CCTV
51	G+4F Labour Camp	Beaver Gulf	Spacotech	Beaver Gulf	Beaver Gulf	CCTV
52	G+10 CB02002, CB02003, CB02015 Azizi Phase II - 3 Buildings	Azizi Development	360Degree	Gardenia Building contracting	Al Andulus Power Mechanical	SCS, CCTV, AV Intercom, ACS and Gate Barrier
53	G+5+R	Al Ghurair Properties	Eng. Al Shaikh Mubarak	Al Ashram Contracting	Al Andulus Power Mechanical	ACS
54	Harbour Creek	Emaar	KEO International Consultant	ASGC	SEMCO	SCS and Fiber Backbone
55	Canadian Specialist Hospital	Buset Contracting & general transport LLC	N/A	N/A	EMCC Electromechanical credible contractor	ELV System
56	Proposed B+G+2 Villa on Plot No: PJFRN054, Palm Jumeriah, Dubai.	Mr. Abdullah Abdul karim Al Arif	Chawla Architectural & Consulting Engineers P.O. Box 281, Dubai, UAE.	Naresco Contracting LLC	Al Madaen Electromechanical Works Co (LLC)	Home Automation system
57	B-088 – Residential building (G +1 st Floor+3 Typical Floor+Roof) on Plot No. 643-0296 at Liwan 2, Dubai, UAE.	Mrs. Jamila Rashed Mohammed Ali Al Falasi	M/s Eng. Mohd. Al Shaikh Mubarak Architectural & Engineering Consultant, P.O. Box 4307, Dubai, U.A.E.	Buset Contracting & general transport LLC	N/A	Gate barrier system
58	Proposed 1B+GF+8 Floors Residential Building on Plot No. 022-025, Dubai Silicon Oasis, Dubai, UAE.	Coral residence	N/A	Deyaar Development	Deyaar Facility Management LLC	ELV System
59	Proposed 1B+G+8+R Storey Residential building on Plot No: 022-013, Dubai Silicon Oasis, Dubai, UAE.	Jade Residence	N/A	Deyaar Development	Deyaar Facility Management LLC	ELV System
60	Proposed 1B+G+8 Storey Residential Building On Plot No: 021-004, Dubai Silicon Oasis, Dubai, UAE.	Ruby Residence	N/A	Deyaar Development	Deyaar Facility Management LLC	ELV System
61	Proposed 1B+G+8 Storey Residential Building On Plot No: 021-006, Dubai Silicon Oasis, Dubai, UAE.	Sapphire Residence	N/A	Deyaar Development	Deyaar Facility Management LLC	ELV System